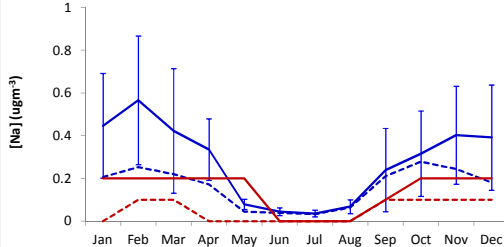


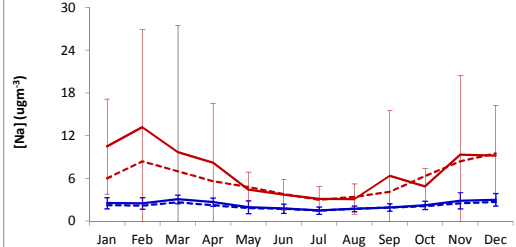
### Alert (82.5°N, 62.5°W)

- Modelled in this study
- - - Modelled in this study (open ocean only)
- Observations of Gong et al. [2002]
- - - Modelled by Gong et al. [2002] (open ocean only)



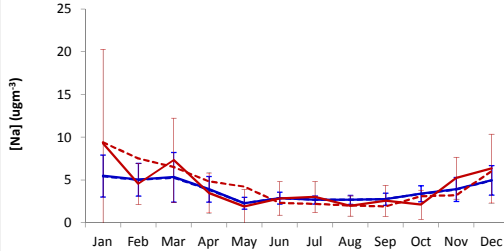
### Heimaey (63.3°N, 20.2°W)

- Modelled in this study
- - - Modelled in this study (open ocean only)
- Observations of Gong et al. [2002] (1992-1995)
- - - Modelled by Gong et al. [2002] (open ocean only)



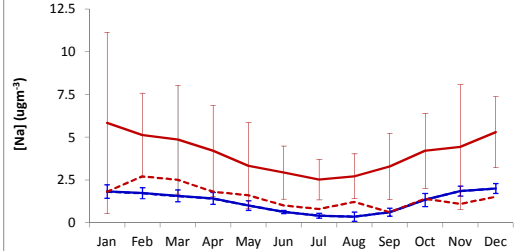
### Mace Head (53.3°N, 9.9°W)

- Modelled in this study
- - - Modelled in this study (open ocean only)
- Observations of Gong et al. [2002] (1992-1994)
- - - Modelled by Gong et al. [2002] (open ocean only)



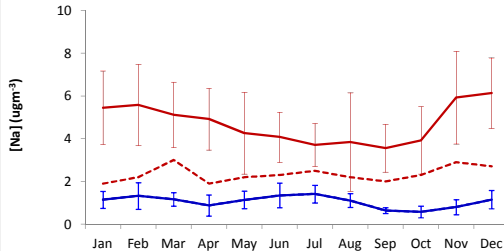
### Bermuda (32.3°N, 65.3°W)

- Modelled in this study
- - - Modelled in this study (open ocean only)
- Observations of Gong et al. [2002] (1992-1995)
- - - Modelled by Gong et al. [2002] (open ocean only)



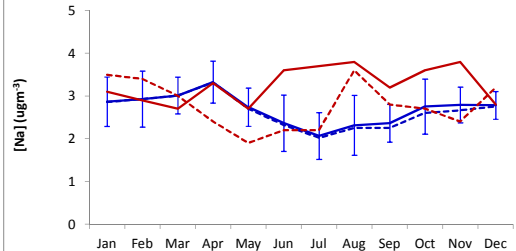
### Oahu (21.3°N, 157.7°W)

- Modelled in this study
- - - Modelled in this study (open ocean only)
- Observations of Gong et al. [2002] (1981-1995)
- - - Modelled by Gong et al. [2002] (open ocean only)



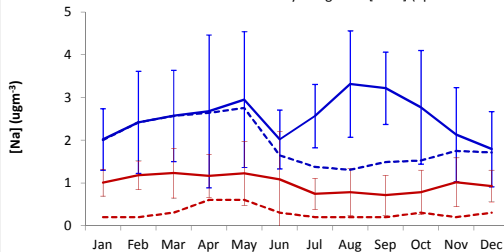
### Cape Grim (40.7°S, 144.7°E)

- Modelled in this study
- - - Modelled in this study (open ocean only)
- Observations of Gong et al. [2002]
- - - Modelled by Gong et al. [2002] (open ocean only)



### Palmer (64.9°S, 64.1°W)

- Modelled in this study
- - - Modelled in this study (open ocean only)
- Observations of Gong et al. [2002] (1990-1996)
- - - Modelled by Gong et al. [2002] (open ocean only)



### Neumayer (70.4°S, 8.3°W)

- Modelled in this study
- - - Modelled in this study (open ocean only)
- Observations of Weller & Wagenbach [2007] (1983-2005; recently extended to 2007)
- - - Modelled by Gong et al. [2002] (open ocean only)

