

SUPPORTING INFORMATION

Constraints on the timing and conditions of high-grade metamorphism, charnockite formation, and fluid-rock interaction in the Trivandrum Block, southern India

E. Blereau, C. Clark, R. J. M. Taylor, T. E. Johnson, I. C. W. Fitzsimons, M. Santosh

Fig. S1: Garnet-biotite gneiss T - X pseudosection with varying ferric iron content (O) from the XRF measured value of 0.39 ($X=0$) to 0.01 ($X=1$). Note that higher X values in this diagram actually correspond to lower X_{Fe2O_3} in the rock. A mid value of $X=0.7$ (black line) was selected for the final P - T diagram.

Fig. S2: Charnockite P - X pseudosection with varying ferric iron content (O) from the XRF measured value of 0.35 ($X=0$) to 0.01 ($X=1$). Note that higher X values in this diagram actually correspond to lower X_{Fe2O_3} in the rock. A mid value of $X=0.7$ (black line) was selected for the final P - T diagram.

Fig. S3: Metapelitic gneiss P - X pseudosection with varying ferric iron content (O) from the XRF measured value of 1.34 ($X=0$) to 0.01 ($X=1$). Note that higher X values in this diagram actually correspond to lower X_{Fe2O_3} in the rock. A mid value of $X=0.7$ (black line) was selected for the final P - T diagram.

Fig. S1

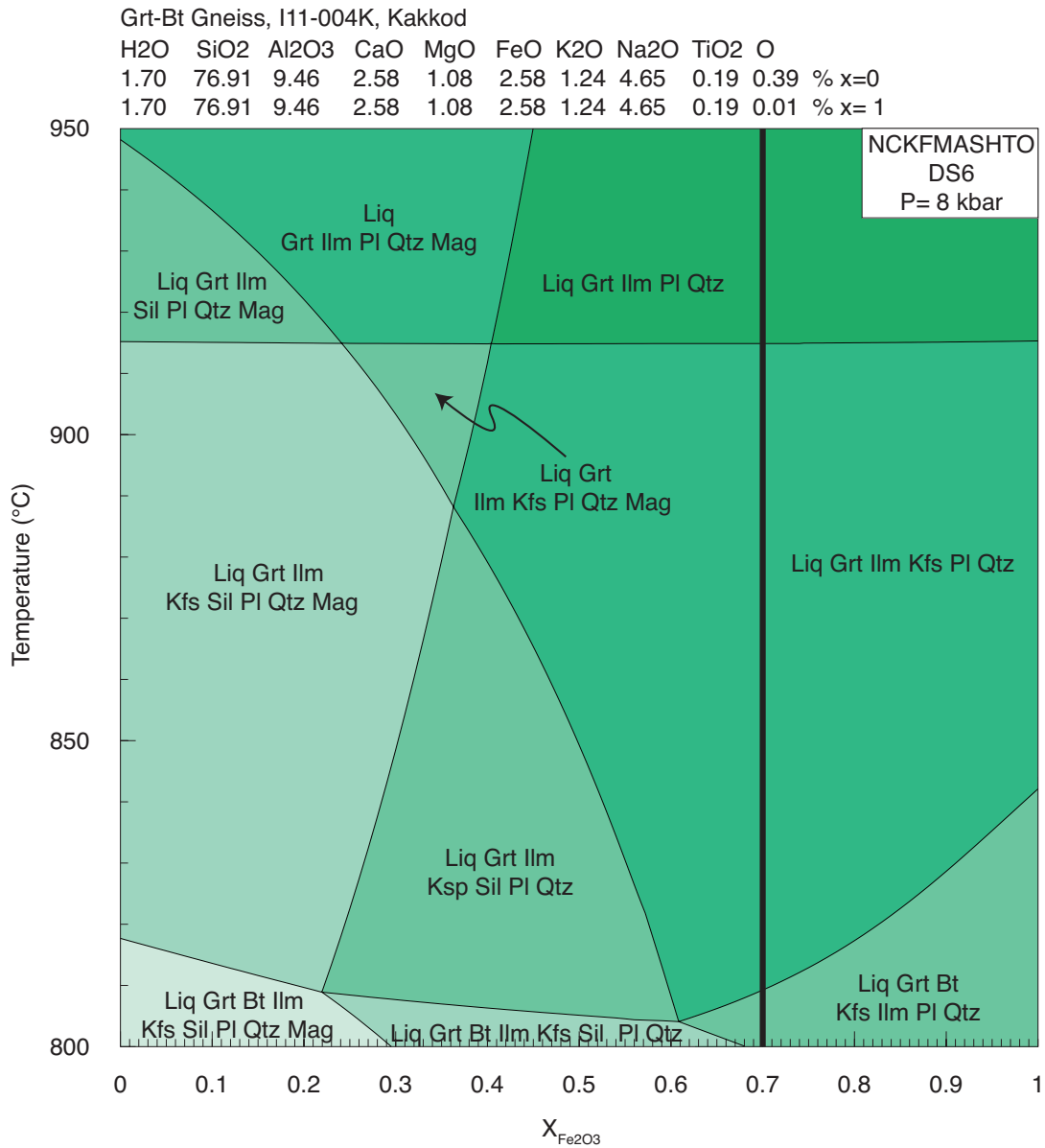


Fig. S1: Garnet-biotite gneiss T - X pseudosection with varying ferric iron content (O) from the XRF measured value of 0.39 ($X=0$) to 0.01 ($X=1$). Note that higher X values in this diagram actually correspond to lower X_{Fe2O3} in the rock. A mid value of $X=0.7$ (black line) was selected for the final P - T diagram.

Fig. S2

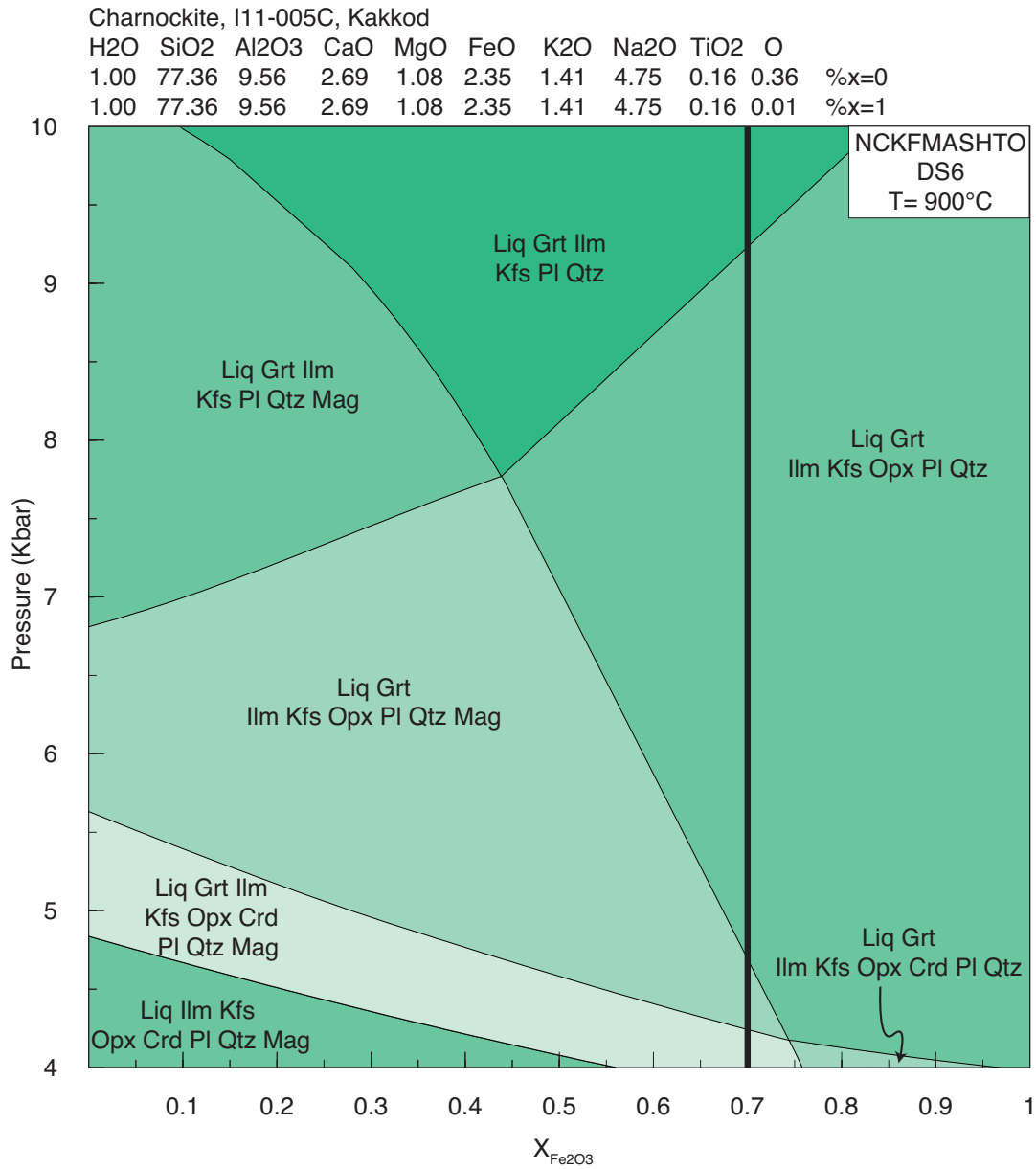


Fig. S2: Charnockite P - X pseudosection with varying ferric iron content (X) from the XRF measured value of 0.35 ($X=0$) to 0.01 ($X=1$). Note that higher X values in this diagram actually correspond to lower X_{Fe2O3} in the rock. A mid value of $X=0.7$ (black line) was selected for the final P - T diagram.

Fig. S3

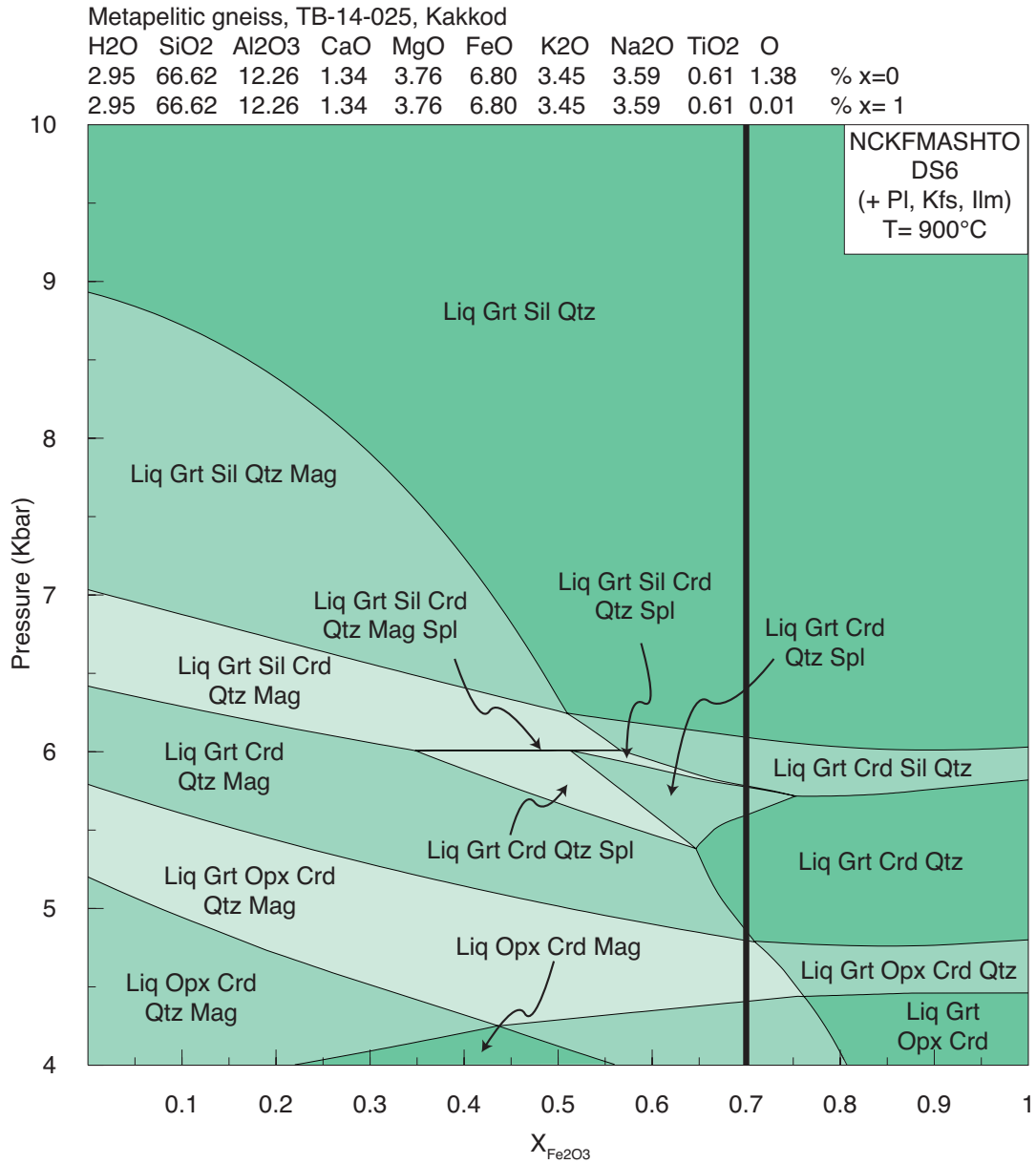


Fig. S3: Metapelitic gneiss P - X pseudosection with varying ferric iron content (X) from the XRF measured value of 1.34 ($X=0$) to 0.01 ($X=1$). Note that higher X values in this diagram actually correspond to lower $X_{\text{Fe}_2\text{O}_3}$ in the rock. A mid value of $X=0.7$ (black line) was selected for the final P - T diagram.